

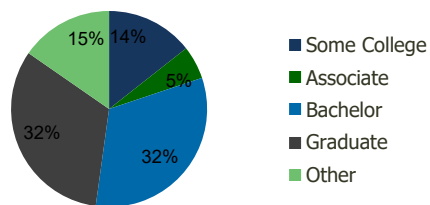
0211-Hickory Ridge Columbia, MD	1.00 Mile Radius	3.00 Mile Radius	5.00 Mile Radius	10.00 Mile Radius
------------------------------------	---------------------	---------------------	---------------------	----------------------

Demographics (2018)

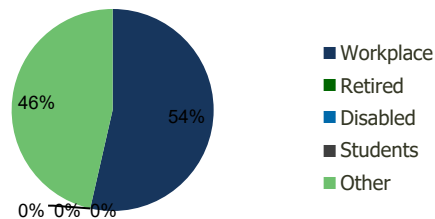
Current Population	8,596	80,976	159,602	540,629
Total Daytime Pop	9,889	112,198	213,944	641,468
Workplace Pop	2,902	60,099	117,652	324,793
Average Household Income	\$161,371	\$129,487	\$135,113	\$127,168
Median Household Income	\$147,304	\$108,175	\$112,767	\$104,552
Total Housing Units	3,206	31,964	60,708	195,567
Median Home Value	\$523,227	\$451,228	\$479,276	\$477,258
Bachelors Degree	32.1%	32.3%	30.7%	28.2%
Graduate Degree	35.6%	32.5%	32.4%	27.0%

Projections (2023)

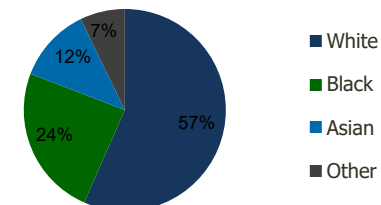
Projected Population	8,718	82,516	165,346	567,537
Projected 5 Year Pop Growth	0.3%	0.4%	0.7%	1.0%
Projected Households	3,259	32,565	62,738	205,481
Projected 5 Year Household Growth	0.3%	0.4%	0.7%	1.0%



Education (3-Mile)



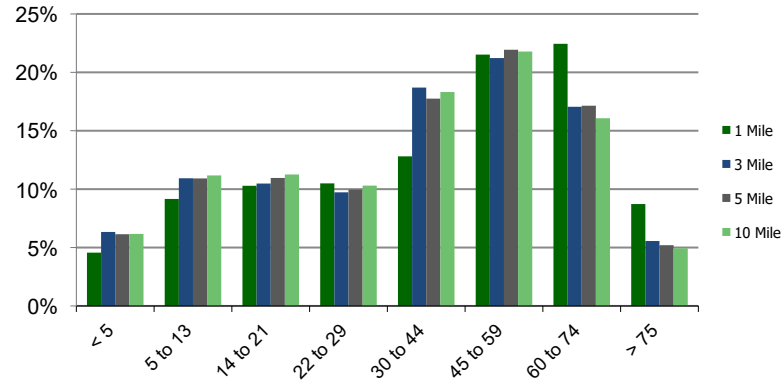
Daytime Population (3-Mile)



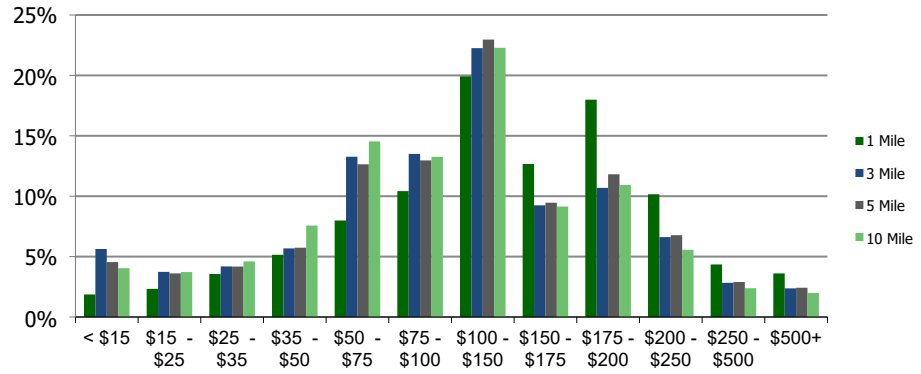
Ethnicity (3-Mile)

This report was produced using data from private and government sources deemed to be reliable and is herein provided without representation or warranty.

Population by Age Range



Household Income by Income Range (\$000)



0211-Hickory Ridge Columbia, MD	1.00 Mile Radius	3.00 Mile Radius	5.00 Mile Radius	10.00 Mile Radius
---	------------------	------------------	------------------	-------------------

Population	Current Estimated Population	8,596	80,976	159,602	540,629
	2010 Census Population	8,861	77,145	146,071	488,130
	2000 Census Population	9,186	72,311	133,204	428,517
	Historical Annual Growth 2000 to 2010	-0.36%	0.65%	0.93%	1.31%
	Estimated Annual Growth 2010 to 2012	-0.35%	0.56%	1.02%	1.17%
	Projected Annual Growth 2012 to 2018	0.28%	0.38%	0.71%	0.98%
Households	Current Estimated Households	3,206	31,964	60,708	195,567
	2010 Census Households	3,289	30,349	55,730	176,256
	2000 Census Households	3,134	27,664	49,811	155,181
	Historical Annual Growth 2000 to 2010	0.5%	0.9%	1.1%	1.3%
	Estimated Annual Growth 2010 to 2012	-0.3%	0.6%	1.0%	1.2%
	Projected Annual Growth 2012 to 2018	0.3%	0.4%	0.7%	1.0%
	Population per Household	2.6	2.5	2.6	2.7
Ethnicity	White	68.1%	56.6%	58.1%	53.0%
	Black or African American	16.9%	24.2%	21.6%	26.4%
	Asian & Pacific Islander	10.2%	12.0%	13.8%	13.7%
	Other Races	4.8%	7.2%	6.4%	7.0%
	Hispanic or Latino Population	6.8%	7.9%	6.9%	8.1%
	Non Hispanic or Latino Population	93.2%	92.1%	93.1%	91.9%

This report was produced using data from private and government sources deemed to be reliable and is herein provided without representation or warranty.