

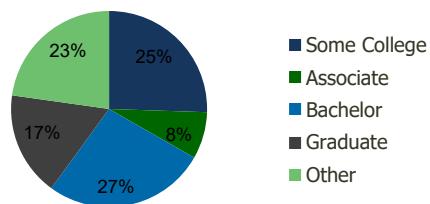
1036-Novato Fair S.C. Novato, CA	1.00 Mile Radius	3.00 Mile Radius	5.00 Mile Radius	10.00 Mile Radius
-------------------------------------	---------------------	---------------------	---------------------	----------------------

Demographics (2018)

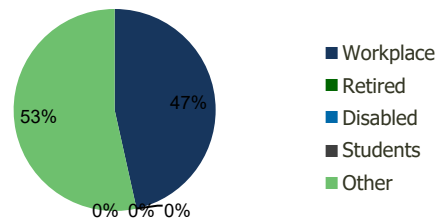
Current Population	14,834	46,401	62,121	174,809
Total Daytime Pop	19,282	45,792	59,199	180,938
Workplace Pop	10,885	21,302	26,897	83,563
Average Household Income	\$106,199	\$129,749	\$131,662	\$137,831
Median Household Income	\$74,798	\$95,415	\$95,189	\$98,865
Total Housing Units	5,846	18,146	24,395	70,527
Median Home Value	\$1,215,169	\$1,402,959	\$1,376,819	\$1,452,073
Bachelors Degree	21.4%	26.8%	28.0%	30.6%
Graduate Degree	14.4%	17.2%	17.3%	20.8%

Projections (2023)

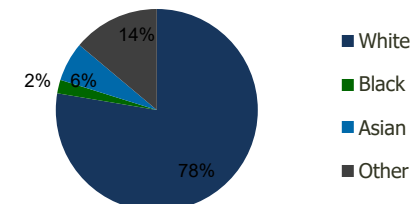
Projected Population	14,851	46,447	62,205	175,564
Projected 5 Year Pop Growth	0.0%	0.0%	0.0%	0.1%
Projected Households	5,850	18,167	24,429	70,813
Projected 5 Year Household Growth	0.0%	0.0%	0.0%	0.1%



Education (3-Mile)



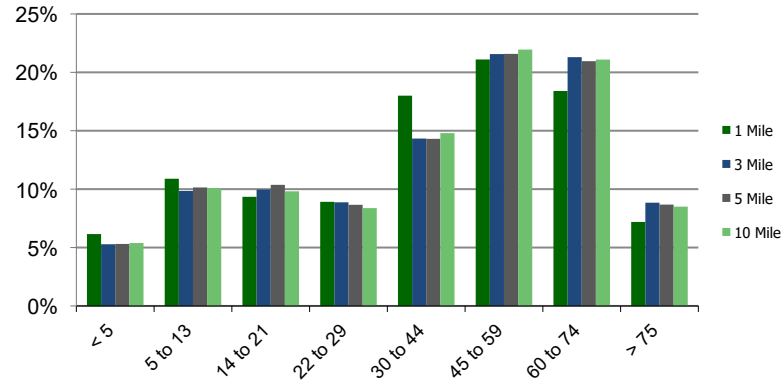
Daytime Population (3-Mile)



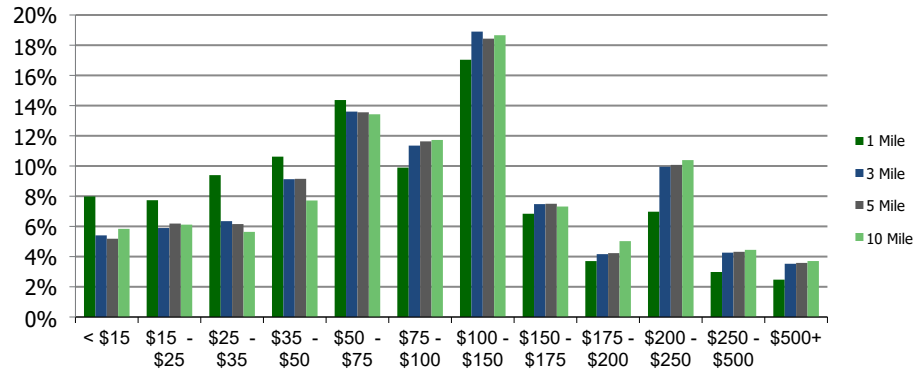
Ethnicity (3-Mile)

This report was produced using data from private and government sources deemed to be reliable and is herein provided without representation or warranty.

Population by Age Range



Household Income by Income Range (\$000)



1036-Novato Fair S.C. Novato, CA	1.00 Mile Radius	3.00 Mile Radius	5.00 Mile Radius	10.00 Mile Radius
--	-------------------------	-------------------------	-------------------------	--------------------------

Population	Current Estimated Population	14,834	46,401	62,121	174,809
	2010 Census Population	14,524	45,809	60,989	171,318
	2000 Census Population	13,976	44,963	57,110	164,059
	Historical Annual Growth 2000 to 2010	0.39%	0.19%	0.66%	0.43%
	Estimated Annual Growth 2010 to 2012	0.24%	0.15%	0.21%	0.23%
	Projected Annual Growth 2012 to 2018	0.02%	0.02%	0.03%	0.09%
Households	Current Estimated Households	5,846	18,146	24,395	70,527
	2010 Census Households	5,719	17,880	23,915	69,131
	2000 Census Households	5,504	17,316	22,078	65,626
	Historical Annual Growth 2000 to 2010	0.4%	0.3%	0.8%	0.5%
	Estimated Annual Growth 2010 to 2012	0.2%	0.2%	0.2%	0.2%
	Projected Annual Growth 2012 to 2018	0.0%	0.0%	0.0%	0.1%
	Population per Household	2.5	2.5	2.5	2.4
Ethnicity	White	71.3%	77.6%	77.1%	79.5%
	Black or African American	2.7%	2.2%	2.3%	1.9%
	Asian & Pacific Islander	6.4%	6.3%	6.5%	5.5%
	Other Races	19.6%	13.9%	14.1%	13.1%
	Hispanic or Latino Population	28.4%	19.0%	19.0%	17.0%
	Non Hispanic or Latino Population	71.6%	81.0%	81.0%	83.0%

This report was produced using data from private and government sources deemed to be reliable and is herein provided without representation or warranty.