

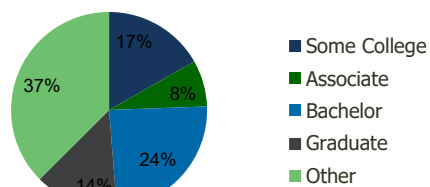
110080-Commons at Holmdel Holmdel, NJ	1.00 Mile Radius	3.00 Mile Radius	5.00 Mile Radius	10.00 Mile Radius
--	---------------------	---------------------	---------------------	----------------------

## Demographics (2020)

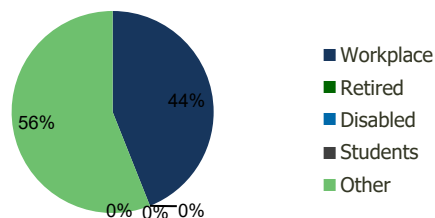
Current Population	7,586	72,422	133,856	486,746
Total Daytime Pop	10,689	72,192	128,750	477,499
Workplace Pop	6,564	31,745	51,942	183,887
Average Household Income	\$140,254	\$125,956	\$131,738	\$132,959
Median Household Income	\$111,467	\$97,688	\$103,224	\$100,225
Total Housing Units	2,785	25,586	48,289	175,280
Median Home Value	\$468,558	\$405,415	\$417,005	\$493,957
Bachelors Degree	27.8%	24.3%	26.4%	26.0%
Graduate Degree	21.4%	13.8%	15.4%	16.5%

## Projections (2025)

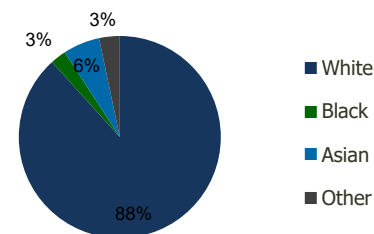
Projected Population	7,664	73,102	135,561	496,860
Projected 5 Year Pop Growth	0.2%	0.2%	0.3%	0.4%
Projected Households	2,814	25,828	48,908	178,771
Projected 5 Year Household Growth	0.2%	0.2%	0.3%	0.4%



Education (3-Mile)



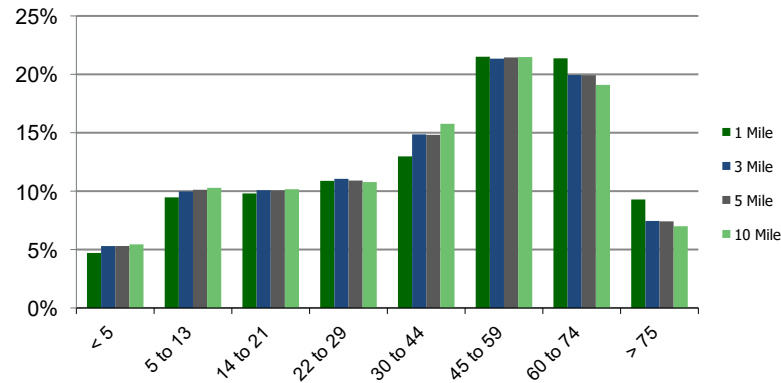
Daytime Population (3-Mile)



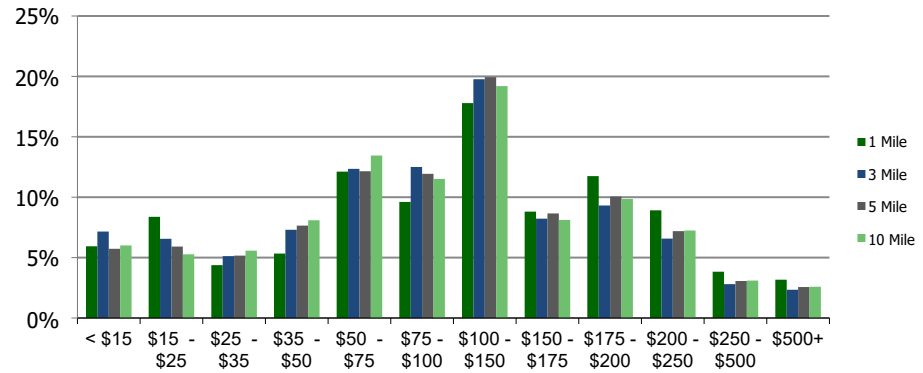
Ethnicity (3-Mile)

This report was produced using data from private and government sources deemed to be reliable and is herein provided without representation or warranty.

**Population by Age Range**



**Household Income by Income Range (\$000)**



**110080-Commons at Holmdel**

Holmdel, NJ

1.00 Mile  
Radius

3.00 Mile  
Radius

5.00 Mile  
Radius

10.00 Mile  
Radius

Population	Current Estimated Population	7,586	72,422	133,856	486,746
	2010 Census Population	7,662	75,336	137,223	484,805
	2000 Census Population	7,454	76,558	137,579	469,378
	Historical Annual Growth 2000 to 2010	0.28%	-0.16%	-0.03%	0.32%
	Estimated Annual Growth 2010 to 2020	-0.09%	-0.37%	-0.23%	0.04%
	Projected Annual Growth 2020 to 2025	0.20%	0.19%	0.25%	0.41%
Households	Current Estimated Households	2,785	25,586	48,289	175,280
	2010 Census Households	2,815	26,690	49,581	174,737
	2000 Census Households	2,612	26,205	48,274	165,766
	Historical Annual Growth 2000 to 2010	0.8%	0.2%	0.3%	0.5%
	Estimated Annual Growth 2010 to 2020	-0.1%	-0.4%	-0.2%	0.0%
	Projected Annual Growth 2020 to 2025	0.2%	0.2%	0.3%	0.4%
	Population per Household	2.7	2.8	2.7	2.8
Ethnicity	White	81.1%	88.3%	87.4%	83.5%
	Black or African American	1.1%	2.5%	3.1%	4.2%
	Asian & Pacific Islander	15.4%	5.9%	5.8%	6.8%
	Other Races	2.5%	3.3%	3.7%	5.5%
	Hispanic or Latino Population	7.4%	8.4%	8.4%	13.8%
	Non Hispanic or Latino Population	92.6%	91.6%	91.6%	86.2%

This report was produced using data from private and government sources deemed to be reliable and is herein provided without representation or warranty.