

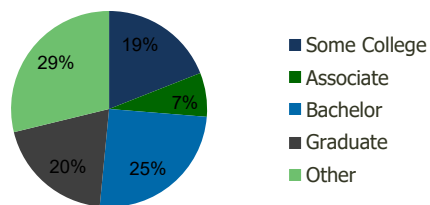
101730-Laurel Plaza Laurel, MD	1.00 Mile Radius	3.00 Mile Radius	5.00 Mile Radius	10.00 Mile Radius
-----------------------------------	---------------------	---------------------	---------------------	----------------------

Demographics (2021)

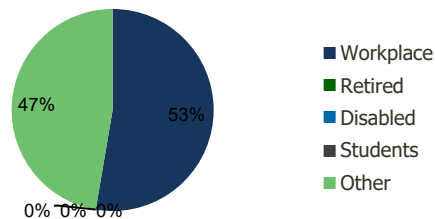
Current Population	12,750	98,461	157,664	768,548
Total Daytime Pop	20,665	81,926	161,702	878,095
Workplace Pop	13,339	43,155	87,815	394,912
Average Household Income	\$87,764	\$106,572	\$114,629	\$119,746
Median Household Income	\$68,647	\$87,424	\$93,651	\$98,491
Total Housing Units	5,116	38,278	56,671	273,958
Median Home Value	\$454,770	\$475,221	\$497,513	\$510,854
Bachelors Degree	18.4%	25.3%	25.1%	25.8%
Graduate Degree	13.2%	19.7%	21.0%	22.7%

Projections (2026)

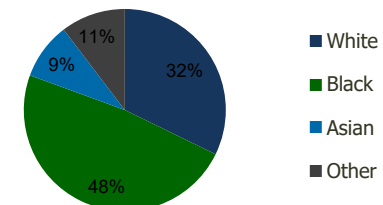
Projected Population	12,889	100,866	161,553	798,282
Projected 5 Year Pop Growth	0.2%	0.5%	0.5%	0.8%
Projected Households	5,181	39,212	58,197	285,278
Projected 5 Year Household Growth	0.3%	0.5%	0.5%	0.8%



Education (3-Mile)



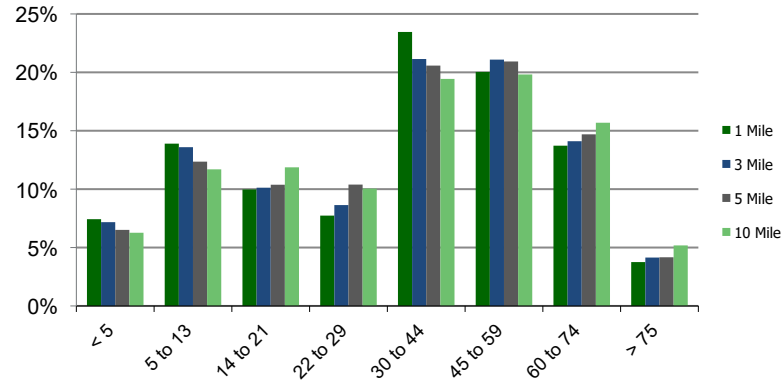
Daytime Population (3-Mile)



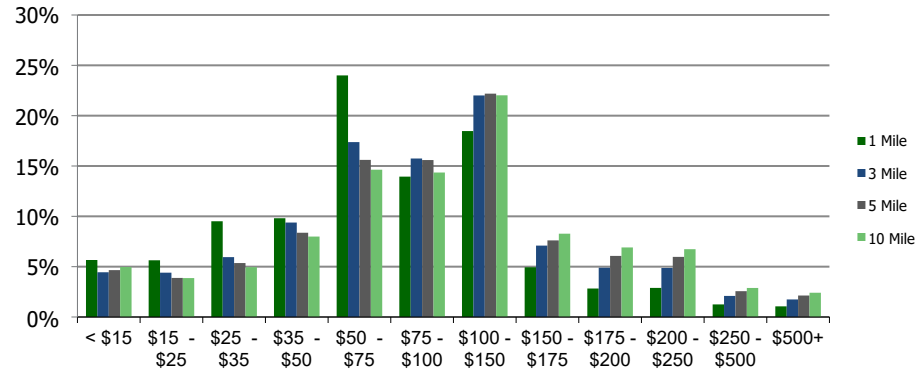
Ethnicity (3-Mile)

This report was produced using data from private and government sources deemed to be reliable and is herein provided without representation or warranty.

Population by Age Range



Household Income by Income Range (\$000)



101730-Laurel Plaza
Laurel, MD

1.00 Mile
Radius

3.00 Mile
Radius

5.00 Mile
Radius

10.00 Mile
Radius

Population	Current Estimated Population	12,750	98,461	157,664	768,548
	2010 Census Population	11,929	85,585	137,173	664,493
	2000 Census Population	11,369	74,042	120,315	583,775
	Historical Annual Growth 2000 to 2010	0.48%	1.46%	1.32%	1.30%
	Estimated Annual Growth 2010 to 2020	0.57%	1.20%	1.19%	1.25%
	Projected Annual Growth 2020 to 2025	0.22%	0.48%	0.49%	0.76%
Households	Current Estimated Households	5,116	38,278	56,671	273,958
	2010 Census Households	4,736	33,169	49,094	235,147
	2000 Census Households	4,813	29,904	44,677	209,765
	Historical Annual Growth 2000 to 2010	-0.2%	1.0%	0.9%	1.1%
	Estimated Annual Growth 2010 to 2020	0.7%	1.2%	1.2%	1.3%
	Projected Annual Growth 2020 to 2025	0.3%	0.5%	0.5%	0.8%
	Population per Household	2.5	2.6	2.7	2.7
Ethnicity	White	36.5%	32.2%	37.1%	42.7%
	Black or African American	39.7%	48.4%	43.7%	35.9%
	Asian & Pacific Islander	5.9%	9.1%	10.1%	10.4%
	Other Races	17.9%	10.4%	9.2%	11.0%
	Hispanic or Latino Population	25.2%	13.2%	11.5%	13.3%
	Non Hispanic or Latino Population	74.8%	86.8%	88.5%	86.7%

This report was produced using data from private and government sources deemed to be reliable and is herein provided without representation or warranty.